

PNEUS

For inside pipes

GB Owner's Manual



HIGH PRESSURE - HAUTE PRESSION
OCHDRUCK - HOCHDRUCK



RISK OF INJECTION -
RISQUE D'INJECTION
WUNDENSGEFAHR - RISIKO

Max. 300 Bar

START-UP PROCEDURES

Connections:

PNEUS gun is an easy and simple solution for spraying inside pipes.

PNEUS gun is delivery ready to use and it does not requires particulars assembling.

1. Connect the product inlet hose from the pneumatic pump to the PNEUS gun.
2. Connect the air hose from the compressor to the air inlet

Fluid Inlet

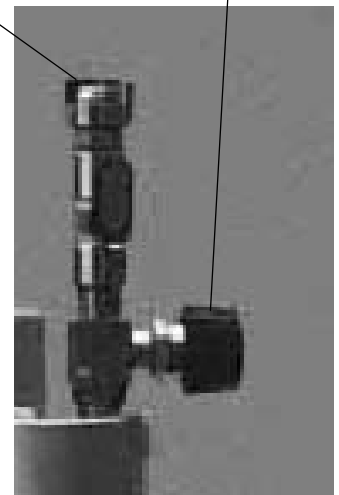


Start-up procedures:

PNEUS gun is provided of rotating spray head which covers every square centimetre for a rotation of 360°. The speed is regulated by a RPM Pneumatic regulator, which can be adjusted from 10 to 100 RPM.

Air Inlet

RPM pneumatic regulator



Regulating arm:

PNEUS gun is provided of six adjustable arms, which can be adjusted from a minimum of 250 mm to a maximum of 700 mm. Before starting to spray, it is necessary to adjust the PNEUS arms.

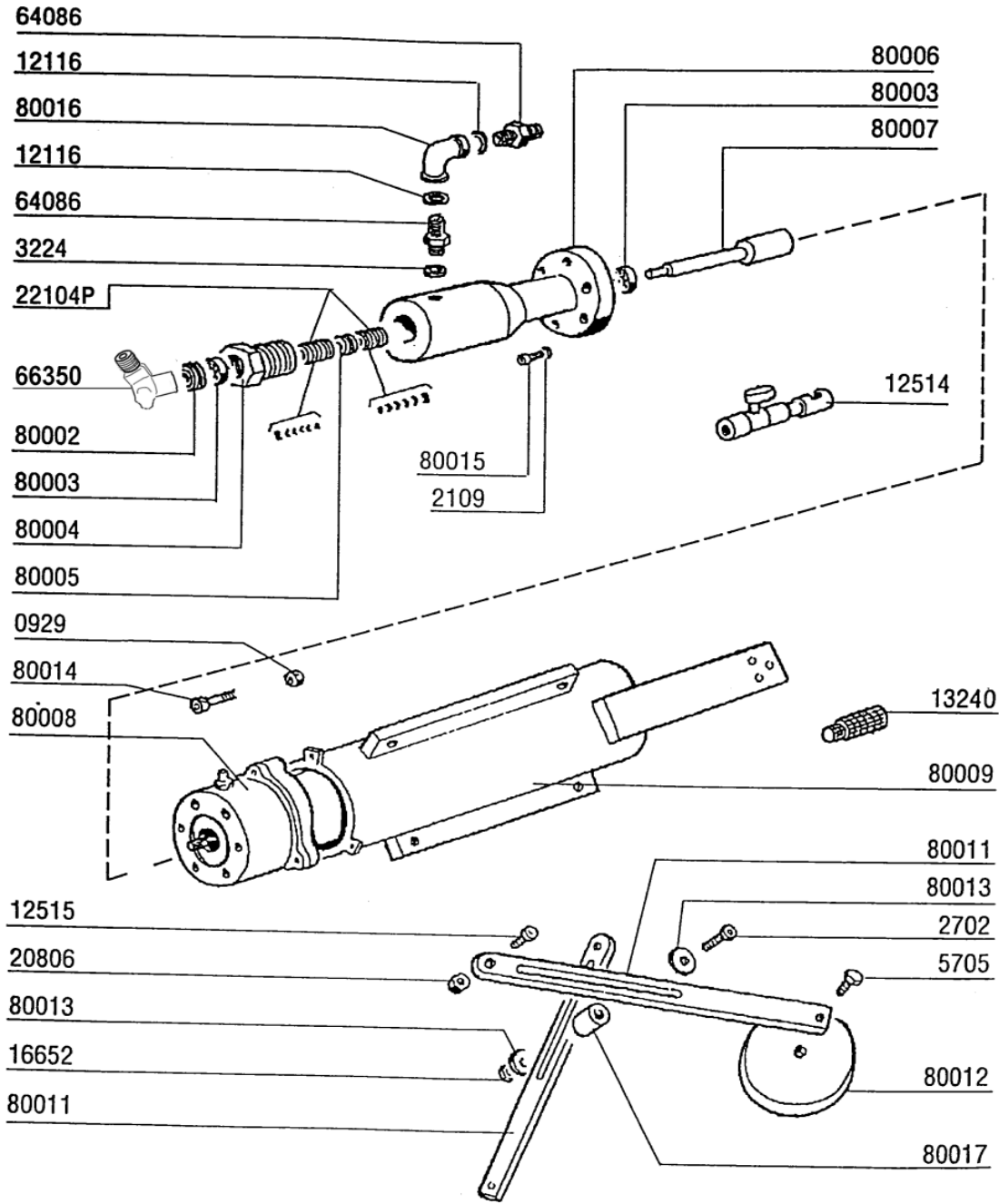
1. Unscrew the fixing screws.
2. Adjust the arms according to the internal diameter of the pipes.
3. Screw well the fixing screws

Now the gun is ready to use!

ATTENTION: Our products are carefully tested and their quality is excellent, but the gun life and its good performance principally depend on its careful cleaning and maintenance.

PROBLEMS	CAUSES	REMEDIES
The guns does not spray	<ul style="list-style-type: none"> a.The tip is clogged b.The tip is worn 	<ul style="list-style-type: none"> a.Clean it with a proper solvent b.Replace it
The arms moves during spraying	<ul style="list-style-type: none"> a.The fixing screw is not tighten enough 	<ul style="list-style-type: none"> a.Tighten it
The fan is not even	<ul style="list-style-type: none"> a.The tip is clogged b.The product is too dense. 	<ul style="list-style-type: none"> a.Clean it b.Thin it, or increase the pump pressure.
The gun rotates too slowly	<ul style="list-style-type: none"> a.The RPM pneumatic regulator had been not adjusted 	<ul style="list-style-type: none"> a.Adjust the RPM regulator according to your spray needs

EXPLOSION DRAWING



N.Ref.	Description	Q.ty	N.Ref.	Description	Q.ty
080000	PNEUS gun				
000929	SELF LOCKING NUT	3	080004	PRESSING NUT	1
000953	DIFFUSER BODY	1	080005	SPACER	1
002109	SCHNOOR WASHER	6	080006	DISTRIBUTOR BODY	1
002702	FIXING SCREW	3	080007	DRIVING SHAFT	1
003224	COPPER GASKET	1	080008	PNEUMATIC REDUCER	1
005705	FIXING BOLT	6	080009	GUN FRAME, PNEUS	1
012116	COPPER GASKET	2	080010	PNEUMATIC NEEDLE VALVE 1/4"	1
012514	DUMP VALVE MF 1/4" WITH RING NUT	1	080011	BALANCE ROD	6
012515	FIXING BOLT	6	080012	WASHER dia. 80	6
013240	SILENCER 1/4"	1	080013	WASHER	6
016652	SELF LOCKING NUT M8	3	080014	BOLT	3
020806	BOLT	6	080015	BOLT	6
064086	NIPPLE M3/8" - M16x1,5 - S.S.	2	080016	ELBOW FF 3/8"	1
080001	BODY ROTATING DISTRIBUTOR	1	080017	SPACER ROD	3
080002	BEARING RING NUT	1	22104P	UPPER/LOWER PACKING dia. 12	2
080003	BEARING	2			